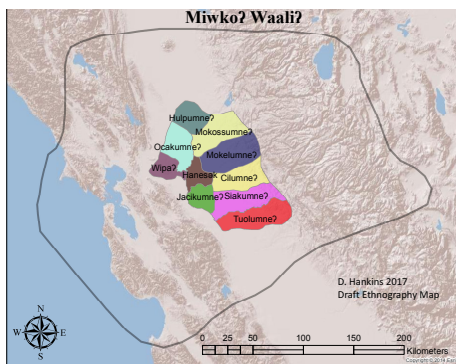
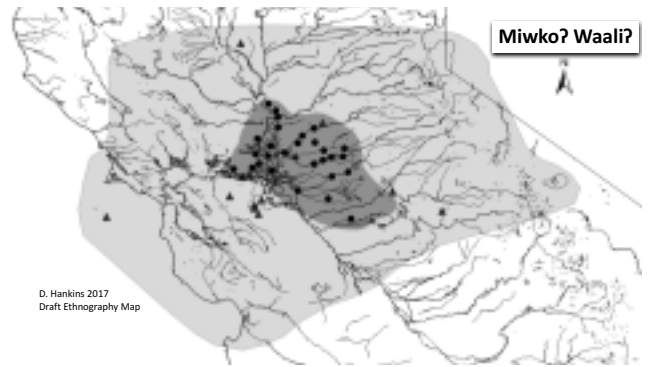


Don L. Hankins
Miwko?
California Indian Water Commission



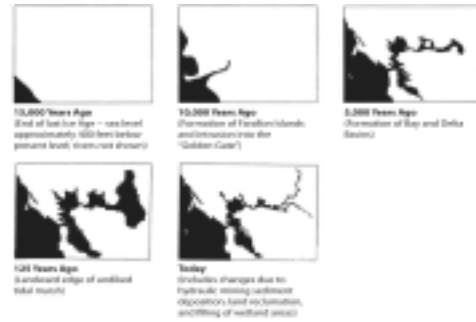
Land is the Source of Law



The Broader Delta



Our Relations - Kinship



The Bay Institute 1992 8



Traditional Cultural Properties

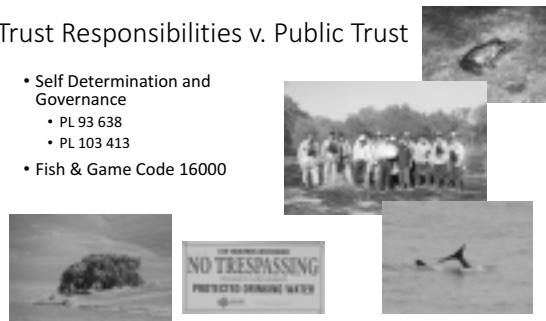


Traditional Cultural Property within Traditional Cultural Landscape



Trust Responsibilities v. Public Trust

- Self Determination and Governance
 - PL 93 638
 - PL 103 413
- Fish & Game Code 16000



Water Rights



- 18 Unratified Treaties
- Pre-emptive rights
- Winters Doctrine
- Agua Caliente v. Coachella Valley Water District & Desert Water Agency

Common Name	Scientific Name	Status (federal/state/CNPS)
Fish		
Delta smelt*	<i>Hypomesus transpacificus</i>	T/E/-
Spring-run Chinook salmon*	<i>Onchorhynchus tshawytscha</i>	T/T/-
Steelhead*	<i>Onchorhynchus mykiss</i>	T/-/-
Sacramento splittail*	<i>Pogonichthys macrolepidotus</i>	-/ssc/-
Green sturgeon*	<i>Acipenser medirostris</i>	T/ssc/-
Pacific lamprey*	<i>Entosphenus tridentatus</i>	-/-/-
Mammals		
Riparian brush rabbit*	<i>Sylvalagus bachmani riparius</i>	E/E/-
Birds		
California clapper rail*	<i>Rallus longirostris obsoletus</i>	E/E, FP/-
Greater sandhill crane*	<i>Grus Canadensis tabida</i>	-/T, FP/-
Tricolored blackbird*	<i>Agelatus tricolor</i>	-/ssc/-
Reptiles		
Western pond turtle*	<i>Actinemys marmorata</i>	-/ssc/-
Amphibians		
California red-legged frog*	<i>Rana draytonii</i>	T/ssc/-
California tiger salamander*	<i>Ambystoma californiense</i>	T/T/-
Invertebrates		
Vernal pool fairy shrimp*	<i>Branchinecta lynchi</i>	T/-/-
Vernal pool tadpole shrimp*	<i>Lepidurus packardii</i>	E/-/-

Environmental Impact Analysis - Mauriometer



- Ecosystem
- Cultural
- Community
- Economic



"...for many parts of the world, in aiming to restore to a "pristine" or "natural" state, managers both ignore prior human impact and deny indigenous human societies their rightful place as effective ecosystem managers."
Hobbs et al. 2011.